



# "REDEFINING THE WAY WE MEASURE SOFT SKILLS OF INDIVIDUALS"

A.I. Powered Soft Skills Assessment

API User Guide 2.0

## SKILLS21

[WWW.SKILLS21.AI](http://WWW.SKILLS21.AI)

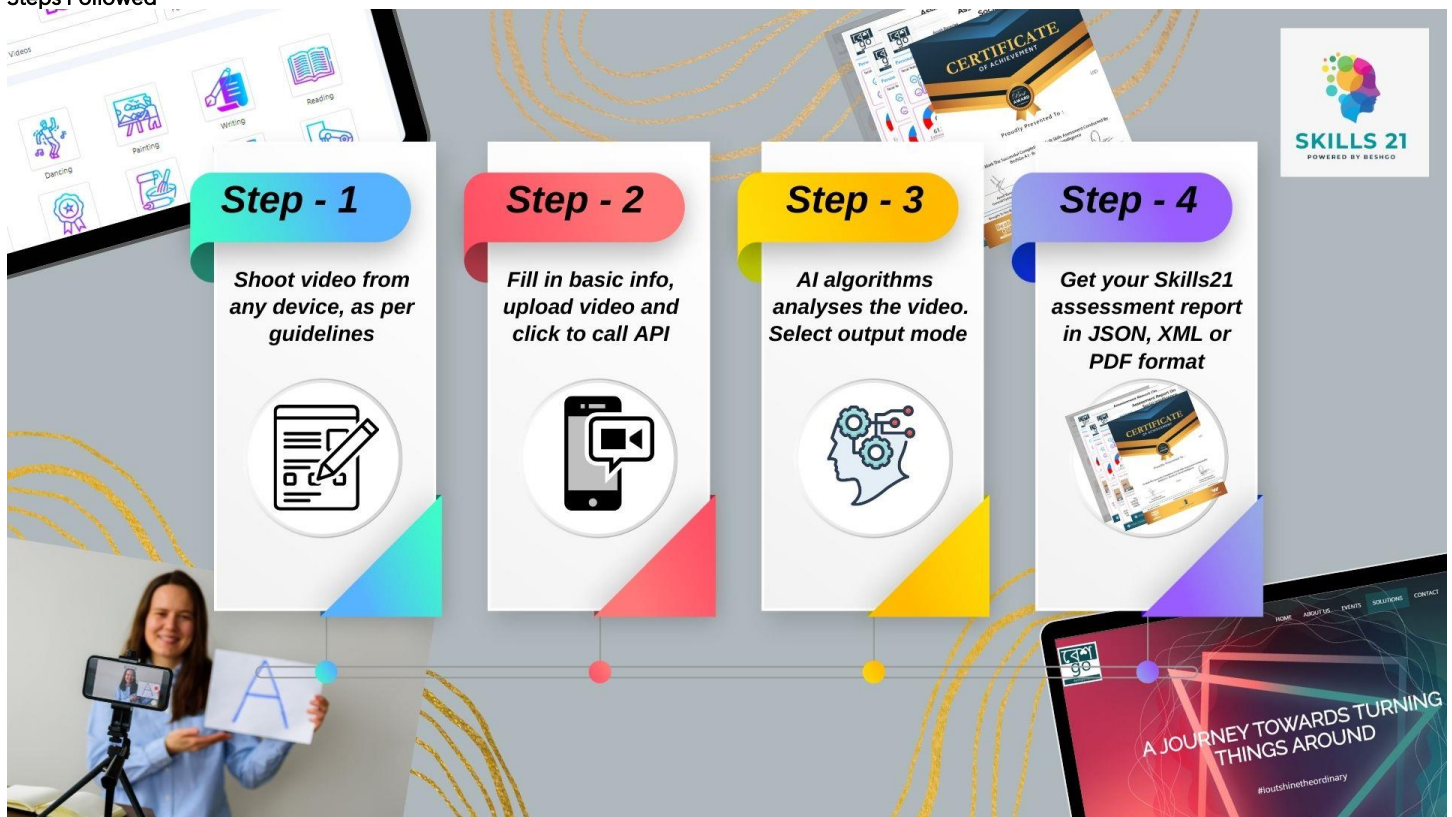
Step by Step Guide to Usage and Commercials

Release: September 2022

A Product of WaysAhead Global Pte. Ltd., Singapore

Visit us at: [www.waysaheadglobal.com](http://www.waysaheadglobal.com)

## Steps Followed



## Guidelines for video shoot:

### What we ask? & What you say?

- How would you introduce yourself to a stranger?
- On a scale of 1-10 where do you rate your own soft skills competencies?
- One hobby or skill that you can do all day long without getting fatigued?
- What would you do if you weren't afraid of anything?
- What do you think about this new format of assessment?

## SKILLS21 Usage Summary

Skills21 could be used in two ways:

### METHOD 1 (suitable for single API call):

1. Go to [www.skill21.ai](http://www.skill21.ai)
2. Fill in the basic details given with the form
3. Upload video
4. Enter License Key
5. Click Submit
6. Select desired output type once video is processed

The screenshot shows the SKILLS21.ai web application interface. The header includes the logo and text: "SKILLS21.ai A.I. Powered Soft Skill Assessment". The form contains the following fields:

- Name\* (Full Name)
- Mobile No. (Mobile No.)
- Email Address\* (example@domain.com)
- Date Of Birth\* (mm/dd/yyyy)
- Upload QR Code\* [ License code ] (Choose File, No file chosen)
- Video Location\* (Choose File, No file chosen)

A blue "Submit" button is located below the form. The footer includes logos for "Powered by WAYS AHEAD", "Besh go", and "Microsoft Silver Partner", along with the text "Version 1.0.02".

Please note that Skills21 is primarily aimed at helping enterprises and institutions, and hence the pricing and API structure is based on block API calls.

However, unitary API call would be **SGD 94.95** per call.

We work with REST APIs using AUTH 2.0 authentication which is the best standard available today in terms of data privacy and security.

Once the video is shot as per dictions, you may directly upload the video from skills21.ai, or share the video with required details for us to process and share results.



Sample OUTPUT in JSON

```

},
{
  "resultID": "RPT211118000002",
  "attributeID": "9",
  "value": "Tone/ VMS - Voice Modulation Score",
  "score": "1.000"
},
{
  "resultID": "RPT211118000002",
  "attributeID": "10",
  "value": "Gibberish Challenge Score",
  "score": "2.000"
},
{
  "resultID": "RPT211118000002",
  "attributeID": "11",
  "value": "WPM / ROS Index",
  "score": "2.000"
}

```



Sample OUTPUT in PDF

Assesment Report On  
Social Intelligence

Report ID : RPT211117000001

**AYUSH BANERJEE**  
 Congratulations !  
 You have successfully completed the assessment.  
 Our current global benchmark for overall score is: **85.17%**

92.65%  
Overall Score

GPA >> **A+ [Excellent]**

**Skills Overview:**  
 There is a huge difference between a job and a career. Who will you be a person with a job or a professional with a career. Let's understand the skill traits that you demonstrated during the assessment.  
 Note: These are reference points only

**Your Personality Style:**  
 Let's have a quick look at the test results and try to understand personality style.

**Quick BeshGo Stats:** Total number of data points that your video has passed through: **62K**

<https://skills21.ai> [info@waysAheadGlobal.com](mailto:info@waysAheadGlobal.com)

Assesment Report On  
Social Intelligence

**Personality Traits & Scores:**

Facial features or expression

Threshold: **85.1%**

Physiognomy  
Best Score: **99.9%**

You belong to the Feeling Center

Threshold: **80.9%**

Emotional stability  
Best Score: **94.2%**

Outgoingness, high energy

Threshold: **56.8%**

Extroversion  
Best Score: **91.3%**

Being careful, or diligent

Threshold: **67.8%**

Conscientiousness  
Best Score: **93.4%**

**Sentiment-O-Meter**  
 Positive / Joyful / Surprise Fear / Start / Negative

**Social Intelligence profiling may help in:**

- Personal Growth**  
Turn your personality weaknesses into strengths.
- Academic Path**  
Learn best and excel in academics and beyond.
- Career Path**  
People with this personality type tend to do well in careers that require order, structure, and perseverance. Jobs that involve dealing with concrete facts and figures (accounting, library science, computer programming, etc.) are all good options.

[Sample Size]

Population % on this planet matching your social intelligence factors

<https://skills21.ai> [info@waysAheadGlobal.com](mailto:info@waysAheadGlobal.com)